



SFERE

design **Simone Micheli**

PATENTED



5 YEARS WARRANTY

MATERIAL:

Super slim heating body in painted mild steel.

FIXING KIT:

Brackets, airvent, hexagonal tool, plugs and screws suitable for use on compact or hollow brick, installation notice.

The fixing kit is compliant with VDI 6036 norm, class 4.

VALVE KIT INCLUDES (ONLY FOR STANDARD VERSION):

Valves kit

Fittings for copper pipe (Ø 12/14/15)

Fittings for multilayer pipe (Ø 16 x2)

FOR WALL-FIT VERSION THE VALVES MUST BE PURCHASED SEPARATELY

PACKAGING:

The radiator is protected by a film in polyethylene and with a carton box. Use and maintenance notice included.

PAINTING PROCESS:

Painted with ecological epoxy. (Certificate DIN 55900-1,-2).

Thermal outputs certified in accredited laboratories in compliance with European norm EN442.

COLORS:

Radiators and accessories: standard white R01 color.

For other colors see color chart.

PRODUCT CERTIFICATES



P. max: 5 bar

T. max: 110° C

Available for central heating systems

Connections: n° 2 x G 1/2" - n° 1 x G 1/2"

AWARD



SFERE WITH WALL-FIT VALVES

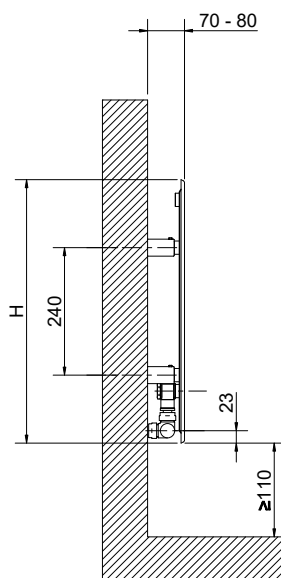
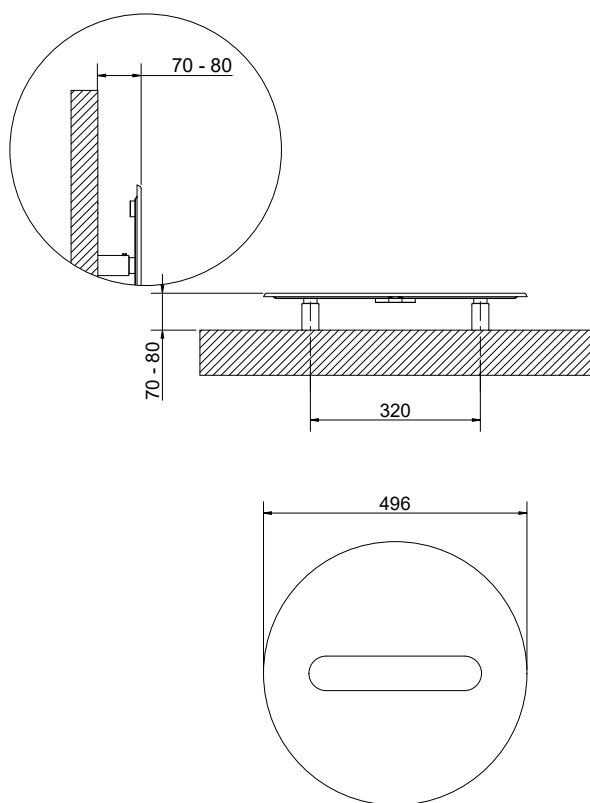
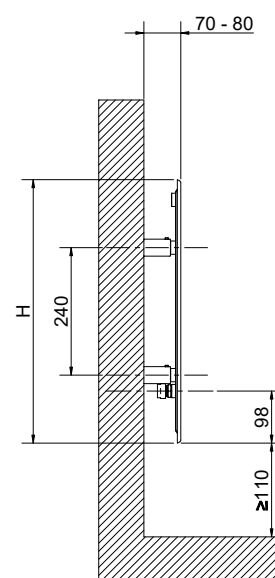


Wall-fit valves (OPTIONAL)

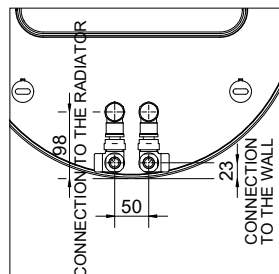


ACCESSORIES



STANDARD
VERSIONWALL-FIT VALVES
VERSION

Version with PIPE CENTRES 50 mm



SFERE

	Art. Nr.	Diameter		Pipe Centres	Dry Weight [Kg]	Surface [m ²]	Water Content [lt]	Thermal output Watt		Exponent n
		D [mm]	I [mm]	I [mm]				Δt = 50°C	Δt = 30°C	
STANDARD VERSION	3540806100211	496	50	50	8,1	0,35	0,3	194	105	1,1950
VERSION FOR WALL-FIT VALVES	3540806100212	496	50	50	8,1	0,35	0,3	194	105	1,1950

Art. Nr. referred to white R01 color- version.

The Art. Nr. of the standard version is inclusive of **VALVE AND HOLDER**.The Art. Nr. of the wall fit version includes only **2 X ½" CONNECTIONS**- valves to be ordered separately.For output at different Δt than 50°C, please refer to the following formula = desired output = output at Δt 50°C x (desired Δt/50)ⁿ